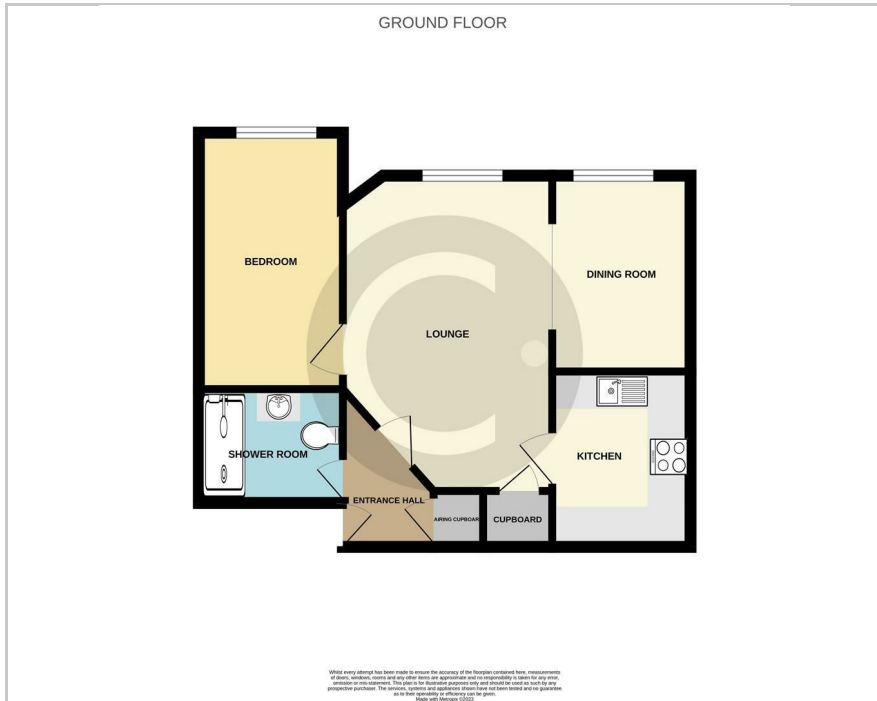




Village Gate 1 Southampton Hill, Fareham, PO14 4BJ  
Offers Over £150,000



## Floor Plan



## Area Map



These particulars, whilst believed to be accurate are set out as a general outline only for guidance and do not constitute any part of an offer or contract. Intending purchasers should not rely on them as statements of representation of fact, but must satisfy themselves by inspection or otherwise as to their accuracy. No person in this firm's employment has the authority to make or give any representation or warranty in respect of the property.

32 Bridge Road, Park Gate, Southampton, Hampshire, SO31 7GF  
Tel: 01489 584298 Email: [hello@chimney potsestateagents.co.uk](mailto:hello@chimney potsestateagents.co.uk) <https://www.chimney potsestateagents.co.uk>

\*CHAIN FREE\*

This over 60s immaculate one-bedroom first-floor apartment is located in a popular development in the heart of Titchfield Village. The entrance hall welcomes you into the property with access to an airing cupboard water tank and doors leading to the modern suite shower room and spacious lounge with a feature fireplace. The lounge is also open plan to the dining room with views over the communal gardens. You then have the main bedroom with a window to the rear aspect and the kitchen with fully integrated appliances and an excellent range of white high-gloss wall and base units.

Outside you can benefit from the beautiful communal gardens and there is non-allocated parking at the front.

Being in the heart of Titchfield, you are only a short walk away from many amenities including shops, a doctor's surgery, and local pubs. Public transport is also ideal as there are frequent buses to nearby towns and a railway station close by.



## Viewing

Please contact our Chimney Pots Estate Agents Office on 01489 584298 if you wish to arrange a viewing appointment for this property or require further information.